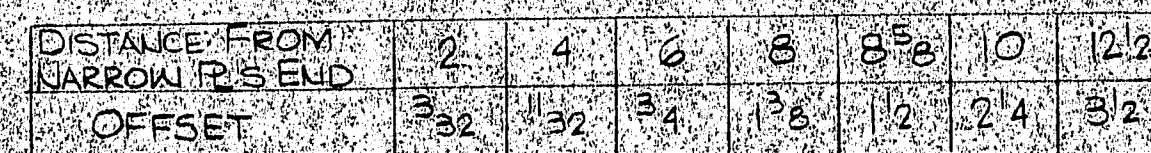
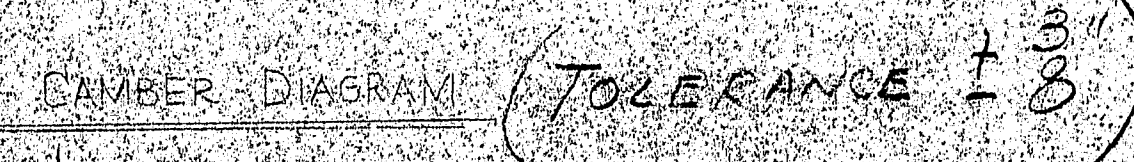


WELDING AND INSPECTION SHALL CONFORM TO THE SPECIFICATIONS FOR WELDED HIGHWAY AND RAILWAY BRIDGES, AWS D2.0-49 AND ADDENDA AND THE SPECIAL PROVISIONS AND SUPPLEMENTAL SPECIFICATIONS FOR THIS PROJECT.



FOR SPICE OF 12" & 15" PLATES:  $a = 1/2$   
FOR SPICE OF 12" & 19" PLATES:  $a = 3/2$

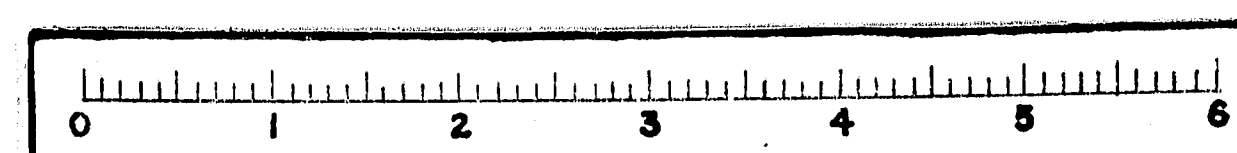
### FLANGE SPLICE DETAIL

SEE DWG C1 FOR BILL OF MATERIAL

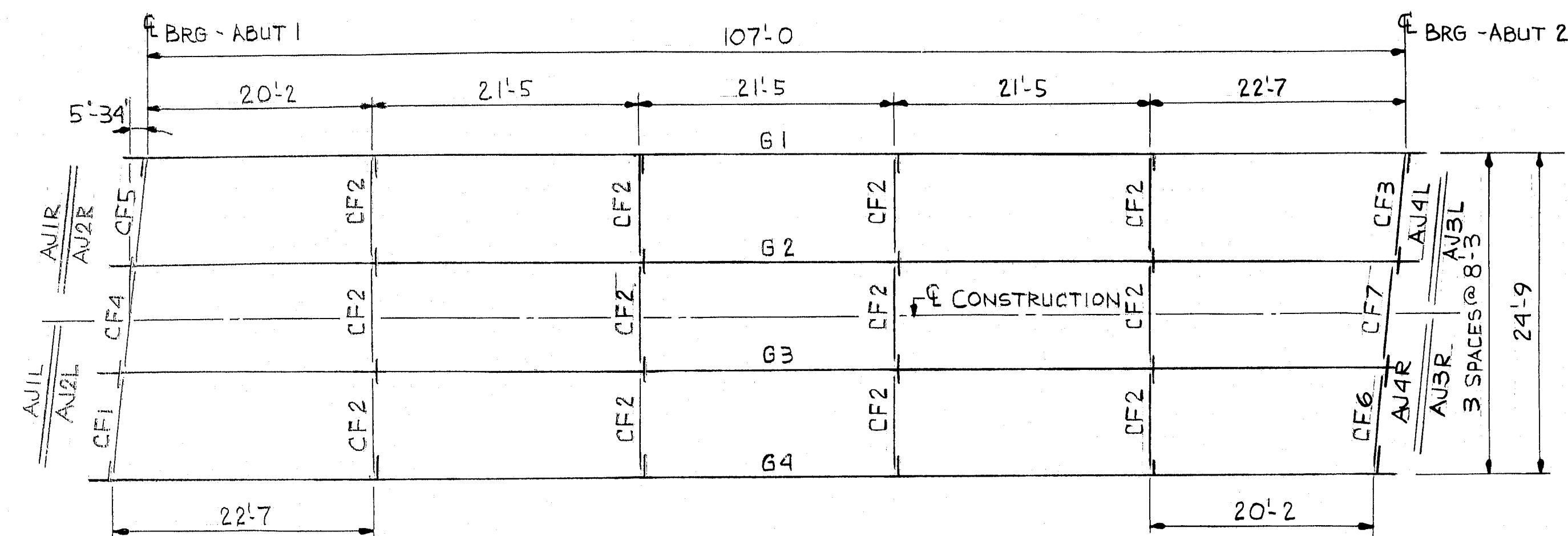
APPROVED 3-11-71  
FEDERAL PROJ. No. I-95-8(87)  
ITEM No. 504701

BEARING & DIAPHRAGM PLATES - WELDING & CAMBER DETAILS				
PRINT DIST.		<i>Bancroft &amp; Martin Inc.</i> <i>South Portland 7, Maine</i>		
2	1-26-71			APP
1	5-16-71			SEPIA
3	5-16-71			STATE
2	5-16-71			CUST
		JOB:	ALTON ROAD BRIDGE	
			ARBYLE MAINE	
		CUSTOMER: CLAMBER CORP.		
		DESIGNER: MSHG BRIDGE DIV.		
REV.		ORDER NO.	JOB NO.	
CHECKED: 1-26-71 <i>RLS</i>			DRAWING NO.	
DRAWN: 4-16-70 <i>NAEL</i>			B70-423 C2	

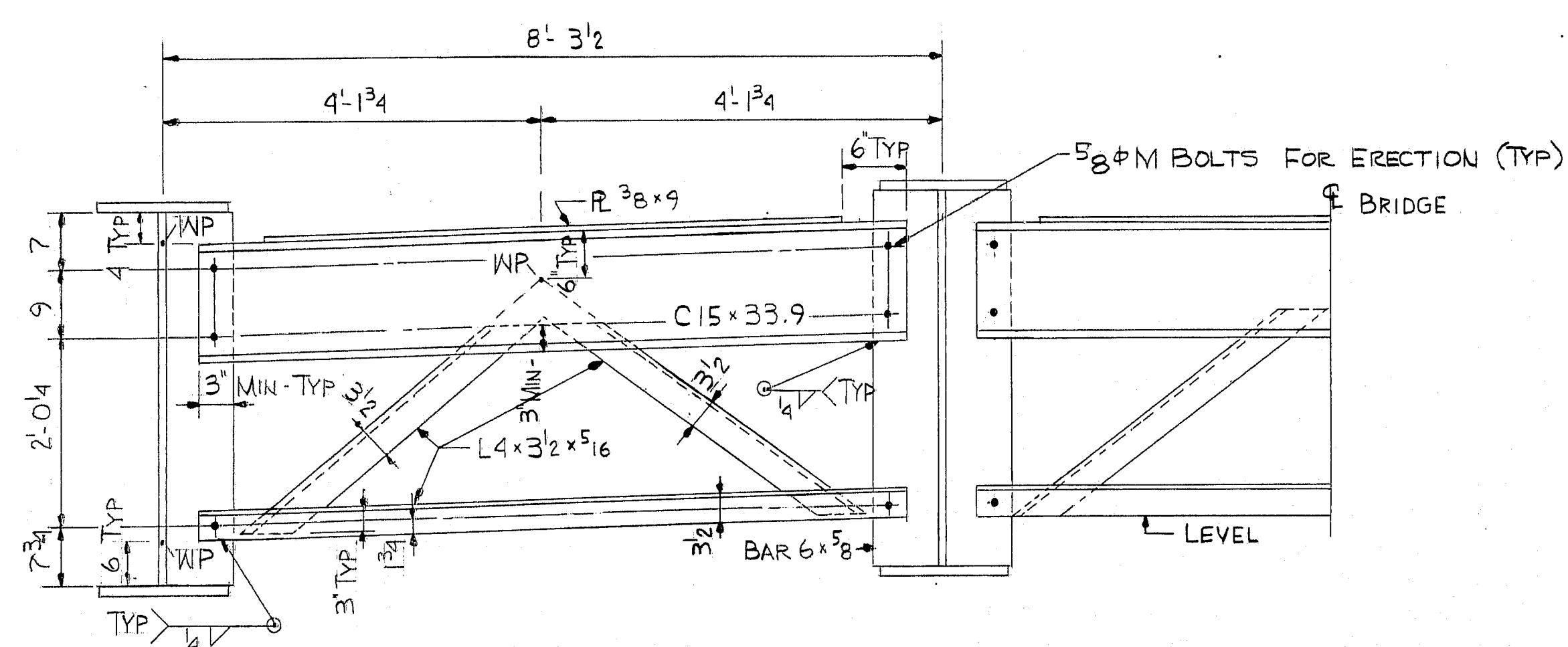
117-148 FOR FABRICATION



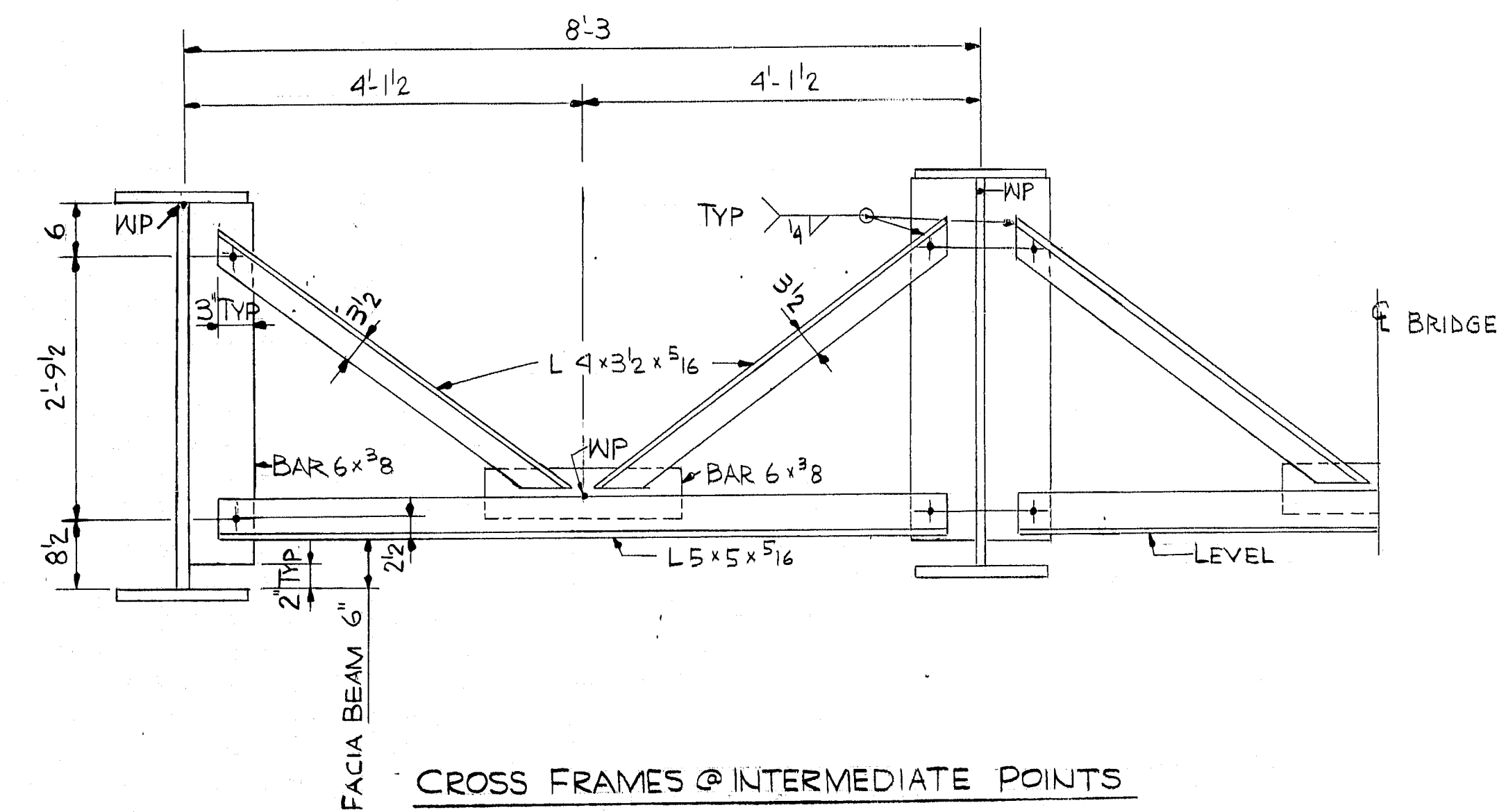




FRAMING PLAN



CROSS FRAMES @ ABUTMENTS

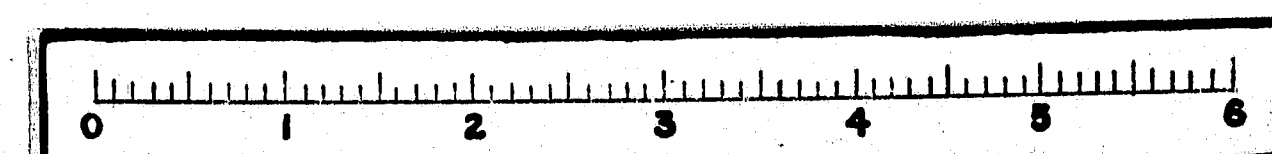


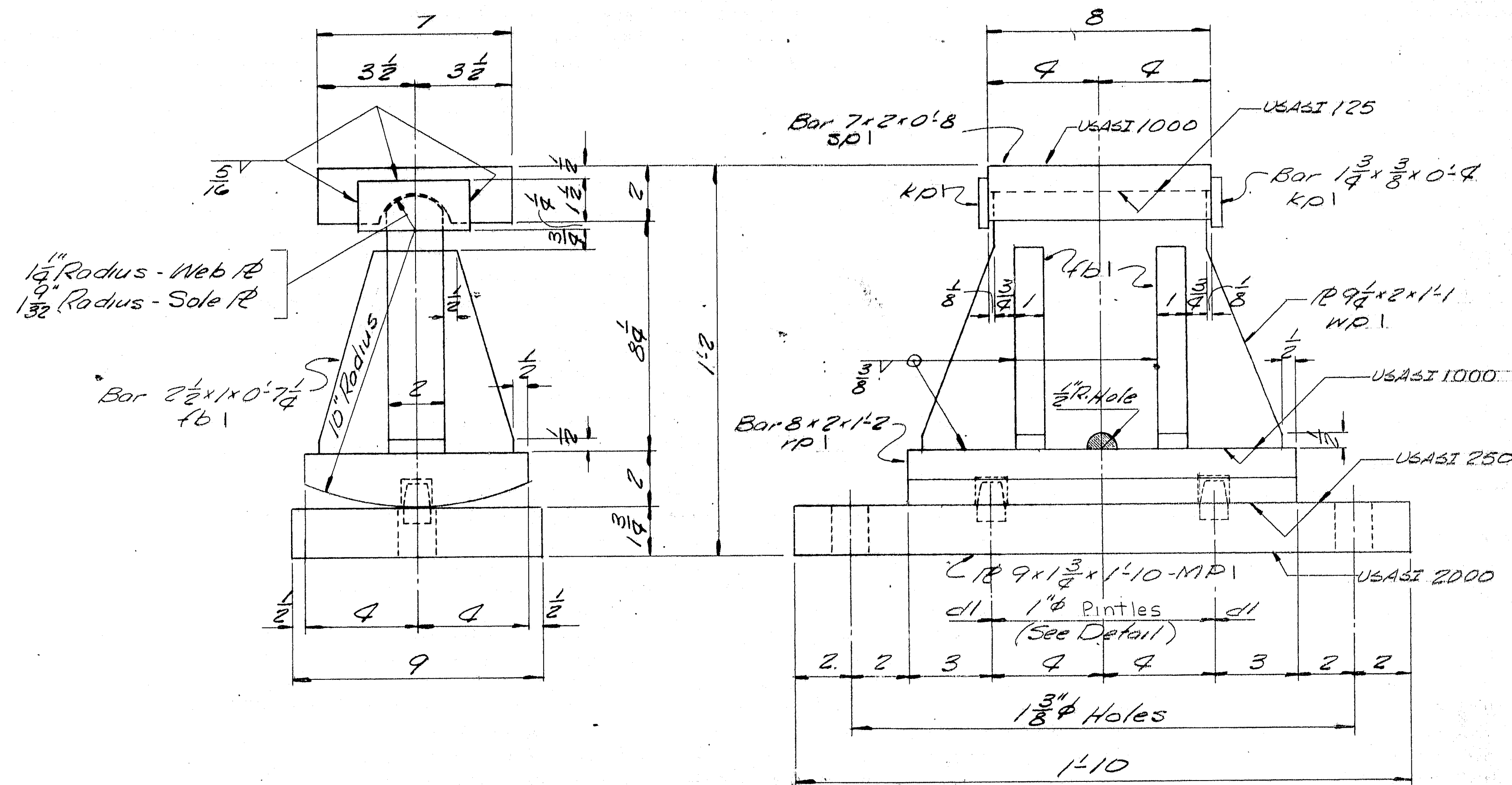
CROSS FRAMES @ INTERMEDIATE POINTS

GENERAL NOTES:  
FORM BRACKET HOLES ARE TO BE PLUGGED WITH 5/8" x 1 1/2" CARRIAGE BOLTS, HEADS TO BE ON OUTSIDE, HOLES TO BE COMPLETELY COVERED. TACK WELD NUTS TO GIRDER WEB.

APPROVED 3-11-71			
FED PROJ No. I-95-B(37) ITEM No. 504.701			
FRAMING PLAN & CROSS FRAME DETAILS			
PRINT DIST.	Baneroff & Martin Inc.		
2	1-26-71	APP	South Portland 7, Maine
1	3-16-71	SEPA	
6	3-16-71	STATE	
2	3-16-71	CUST	
JOB:			ALTON ROAD BRIDGE
			ARGYLE MAINE
CUSTOMER:			CIAMBRO CORP.
DESIGNER:			M.S.H.C. BRIDGE DIV.
REV.	ORDER NO.	JOB NO.	DRAWING NO.
CHECKED 1-25-71 PLF			B70-423 A1
DRAWN 11-11-70 DWL			

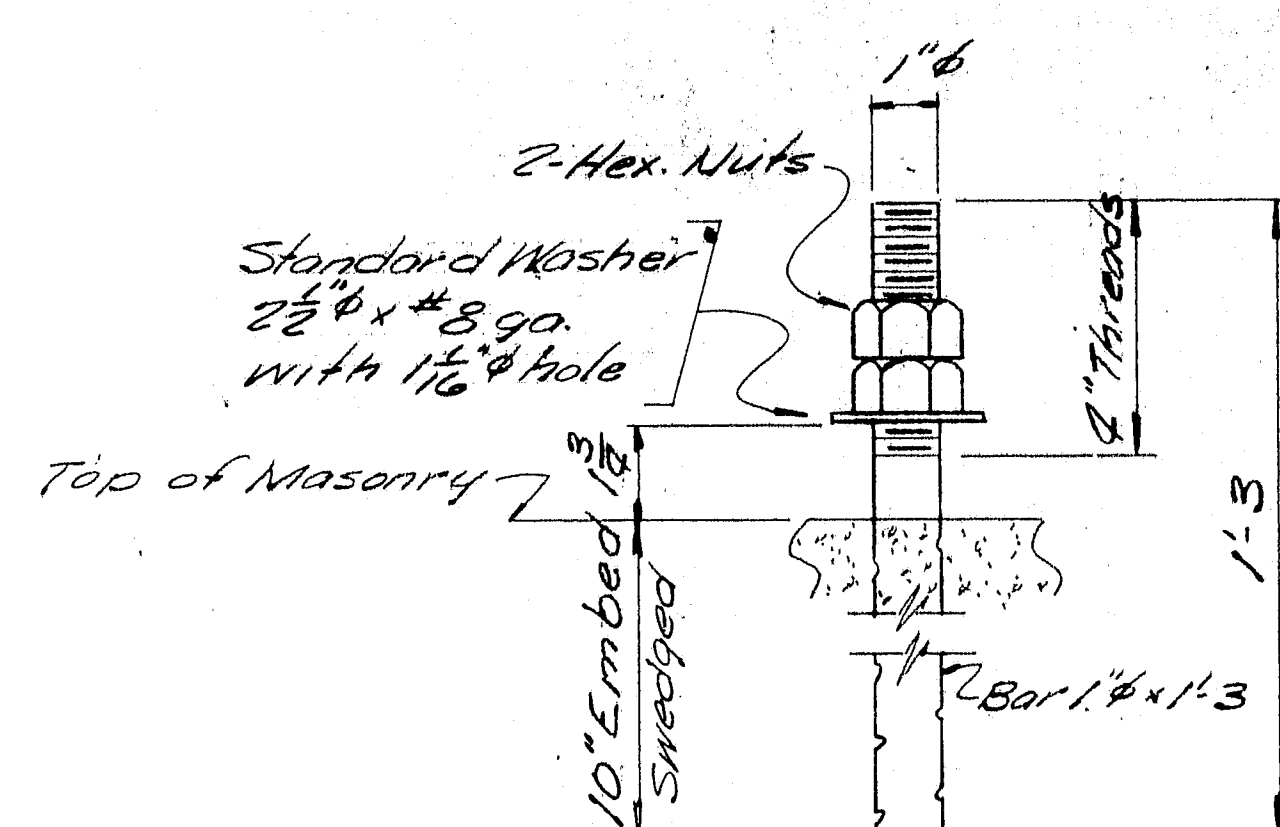
117-149





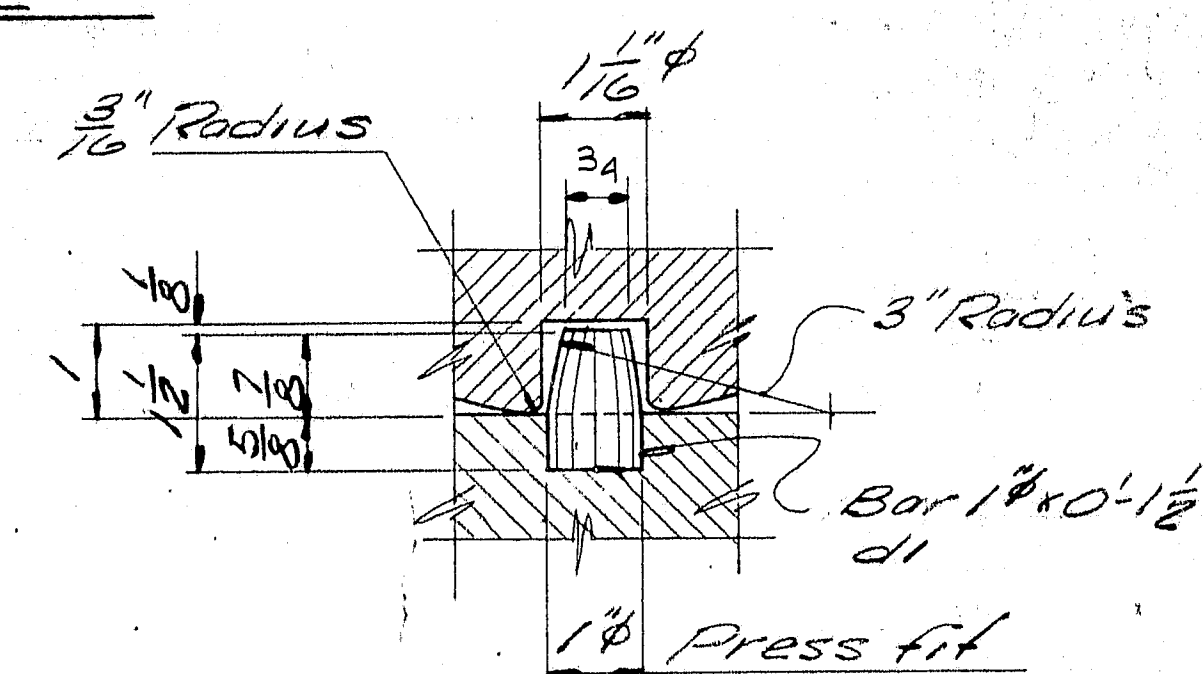
### EXPANSION PEDESTAL EPC-4

4 REQ'D.

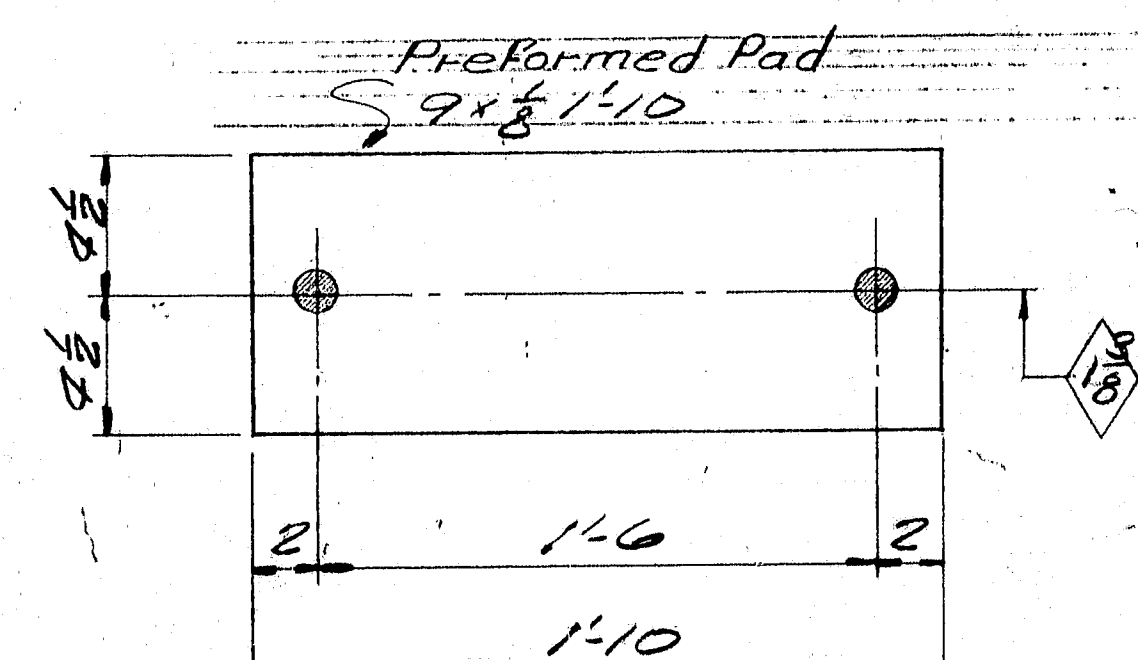


### ANCHOR BOLT ABI

8 REQ'D.



### PINTLE DETAIL



### PREFORMED PAD

FP - 4 REQ'D.

### PAINT NOTE:

No paint on top of sole plates "sp" and 1" down from top on sides, coat with boiled linseed oil.  
No paint on surface with USASI 125 finish, coat with mixture of white lead and tallow.  
No paint on Anchor Bolts - Oil tags.  
Masonry ris & bearing surfaces of expansion bearing rollers shall receive 2 coats of shop paint.

SHIP		BILL OF MATERIAL				JOB NO. B70-423
						DWG. NO. B1
MARK	NO.	MARK	SHAPE	LENGTH	WT.	REMARKS
EXPANSION PEDESTAL ASSY.						
MP1	4		9x1 1/2	1	10	
	4	10	8x8	1	2	
	4	10	9x1 1/2	1	1	
SP1	4		7x2	0	8	
	16	10	2 1/2 x 8 ga.	0	7 1/2	
	8	d1	1" dia	0	1 1/2	
	8	kpl	1 3/4 x 3/8	0	4	
AB1	8		1" dia	7	3	Swaged
	16	shop	1" dia			
Field	8		1" washer			Std. Washer - 2 1/2" O.D. x 1" Bga. with 1 1/2" hole
FP1	4		9x8	1	10	Preformed Pad Req. No. 3936
ITEM 504.701						
PROJECT No. I 95-8.87						
Sole plates "sp" to be field welded to stringers.						

Bearing material to be ASTM-A36, Anchor bolts to be A36.

All welds to be made with E7018 or E7023

SHOP CONNECTIONS: Welded

FIELD CONNECTIONS:

HOLES: As noted

PAINT: STATE OF MAINE S.H.C. STANDARD

Spec., and as noted.

BLAST CLEAN

### EXPANSION PEDESTAL DETAIL

Bancroft & Martin Inc.

South Portland 7, Maine

ALTON ROAD BRIDGE

ARGYLE, MAINE

CUSTOMER: CIAMBRO CORP

DESIGNER: M.S.H.C. BRIDGE DIV.

BREWER 3-8-71  
CUST 5-16-71  
F&F 12-10-70  
SHOP 12-10-70  
F&F 12-4-70  
CHECKED 12-4-70

DRAWN 10-19-70 DWL

REVISION

REVISION

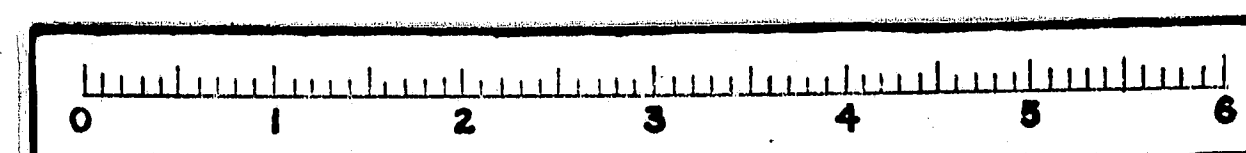
REVISION

ORDER NO.

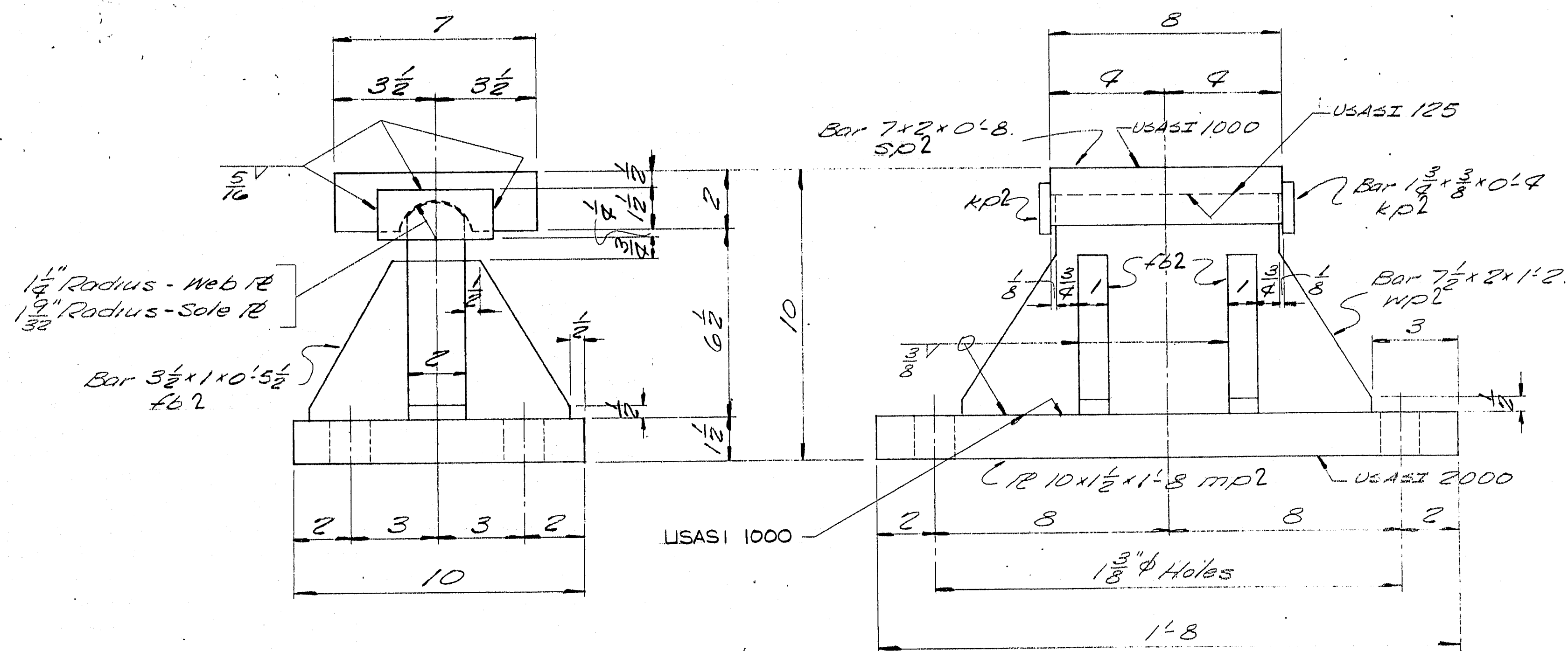
JOB NO. B70-423

DWG. NO. B-1

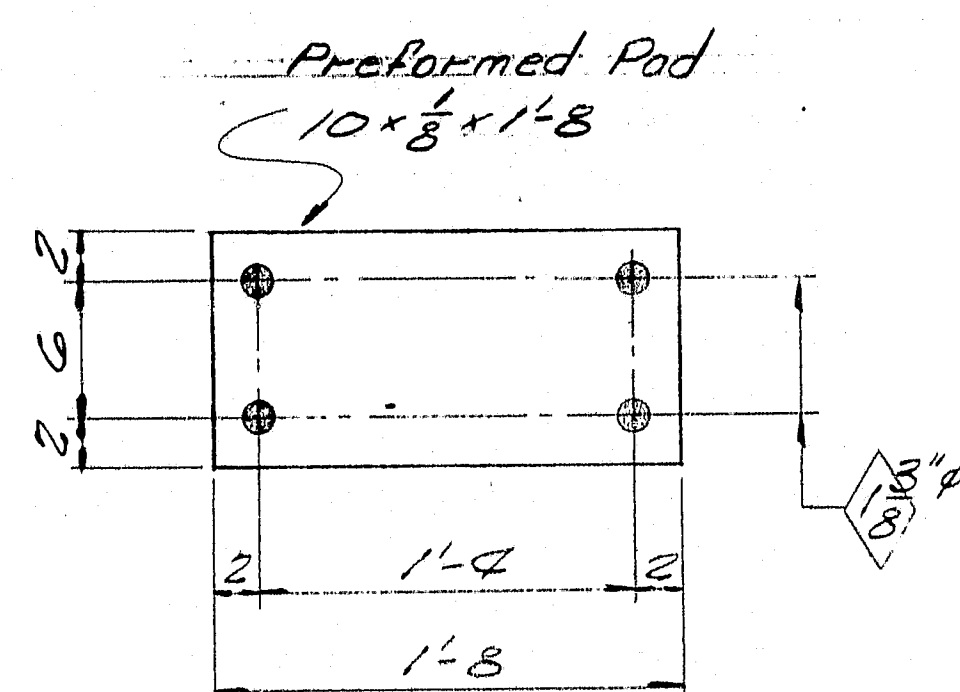
117-150-PC/MK REV.



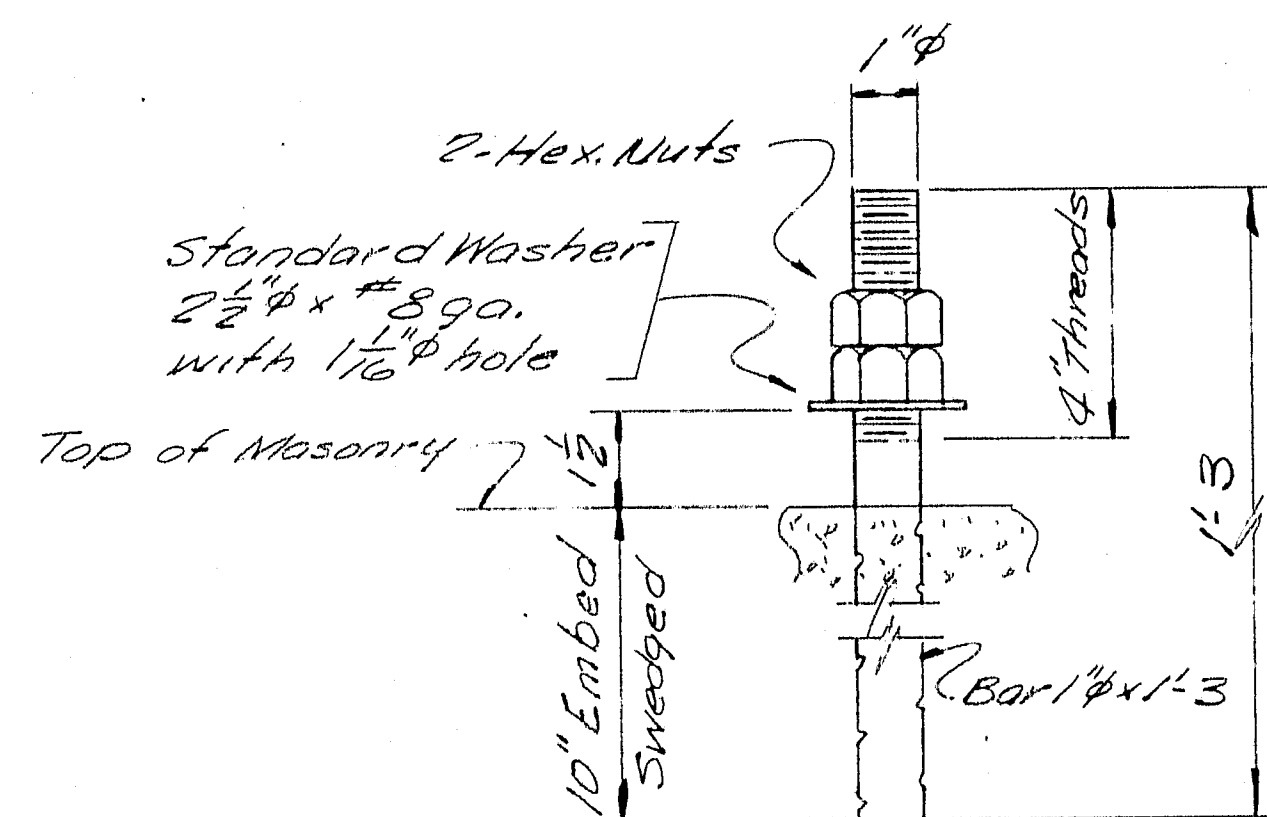




FIXED PEDESTAL FPC-2  
4 REQ'D.



PREFORMED PAD  
FP2 - 4 REQ'D.



ANCHOR BOLT ABI  
16 REQ'D.

PAINTE NOTES:

No paint on top of sole plates "sp" and 1" down from top on sides, coat with boiled linseed oil.  
No paint on surface with USASI 125 finish, coat with mixture of white lead and tallow.  
No paint on Anchor bolts - Oil them.

SHIP BILL OF MATERIAL						JOB NO. B70-423
						DWG. NO. B2
MARK	NO.	MARK	SHAPE	LENGTH	WT.	REMARKS
FPC2			FIXED PEDESTAL			ASSY.
	4	MDL	R10X1 1/2	1	8	
	4	WPL	Bar 7x2	1	2	
SP2	4		Bar 7x2	0	8	
	8	KPL	Bar 1 1/2 x 3/8	0	2	
	16	FB2	Bar 3 1/2 x 1	0	5 1/2	
ABI	16		Bar 1" dia	1	3	Swedged
	32	SHD	1" Hex Nut			
Field	16		1" Washer			Std. washer 2 1/2" O.D. x 5/8" gage with 1/16" hole.
FP2	4		10x8	1	8	Preformed Pad Req. #3986

ITEM 504.701  
PROJECT NO. I95-3 (87)  
Sole plates "sp" to be field welded to stringers.

Bearing material to be ASTM A36, Anchor bolts to be A36.  
All welds to be made with E70, 16, 18, or 28  
SHOP CONNECTIONS: welded  
FIELD CONNECTIONS:  
HOLES: As noted  
PAINT: STATE OF MAINE SHC. STANDARD spec, and as noted.  
CLEANING: BLAST CLEAN

FIXED PEDESTAL DETAIL

Bancroft & Martin Inc.  
South Portland 7, Maine

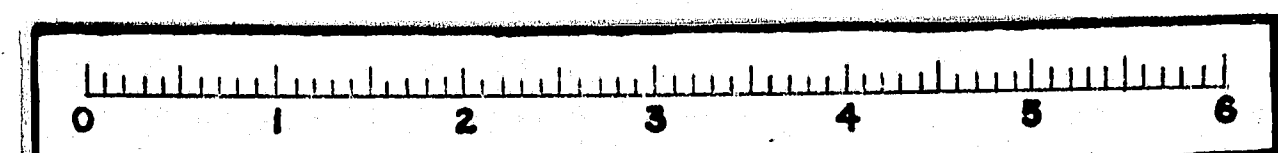
ALTON ROAD BRIDGE  
ARGYLE, MAINE

CUSTOMER: CIANBRO CORP.  
DESIGNER: M.S.H.C. BRIDGE DIV.

ORDER NO. \_\_\_\_\_ JOB NO. B70-423  
DWG. NO. B2

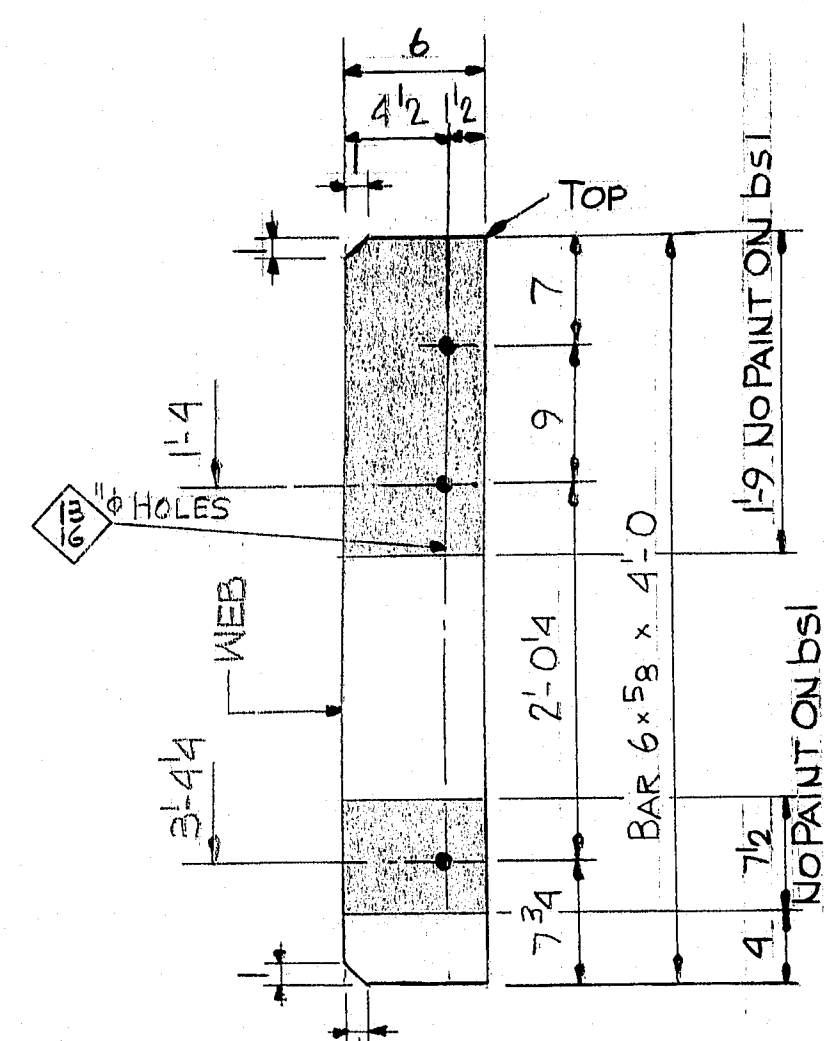
DESIGNED	8-18-71	IP
CUST	3-16-71	2
CHK	12-10-70	3
SHD	12-10-70	4
FA	12-4-70	2
CHECKED	12-4-70	HL
DRAWN	10-9-70	DWL
REVISION		
REVISION		
REVISION		

117-151 P. 117 REV

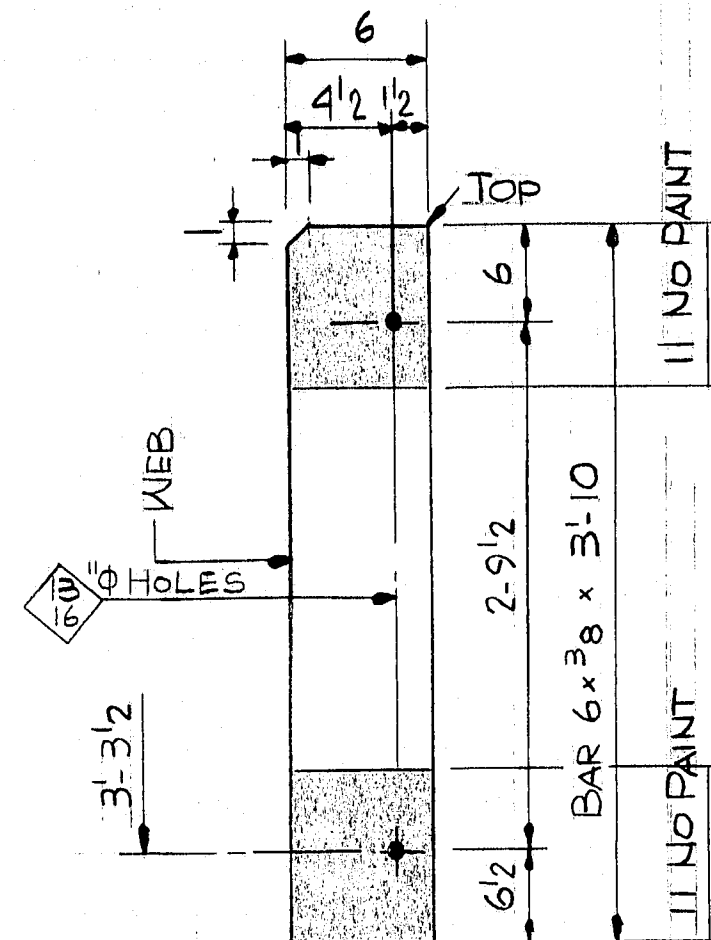




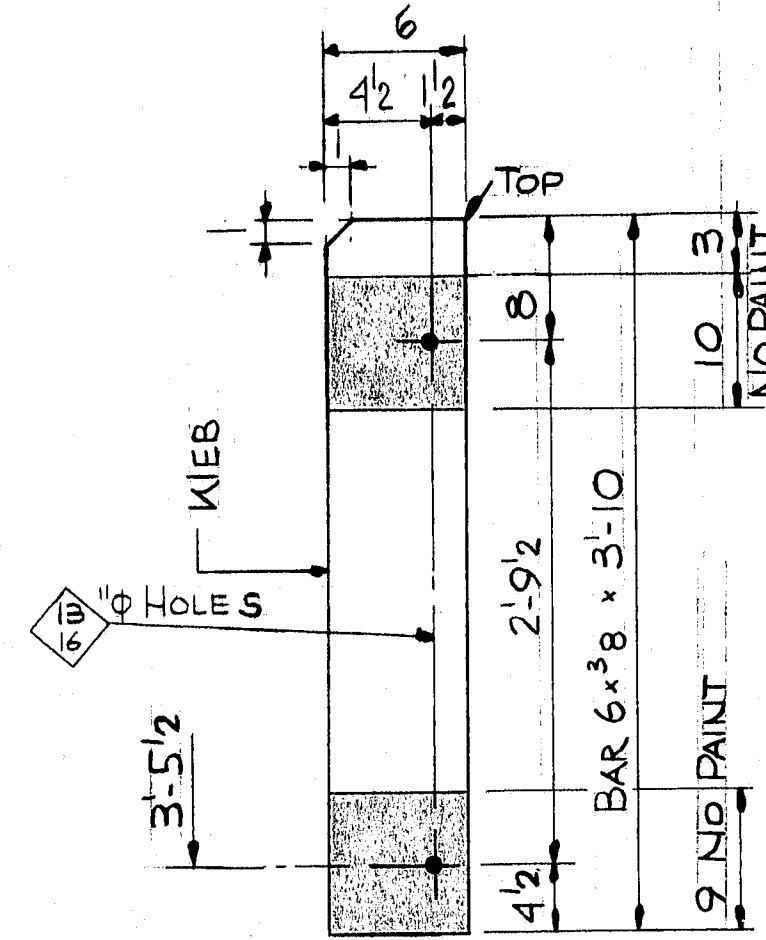




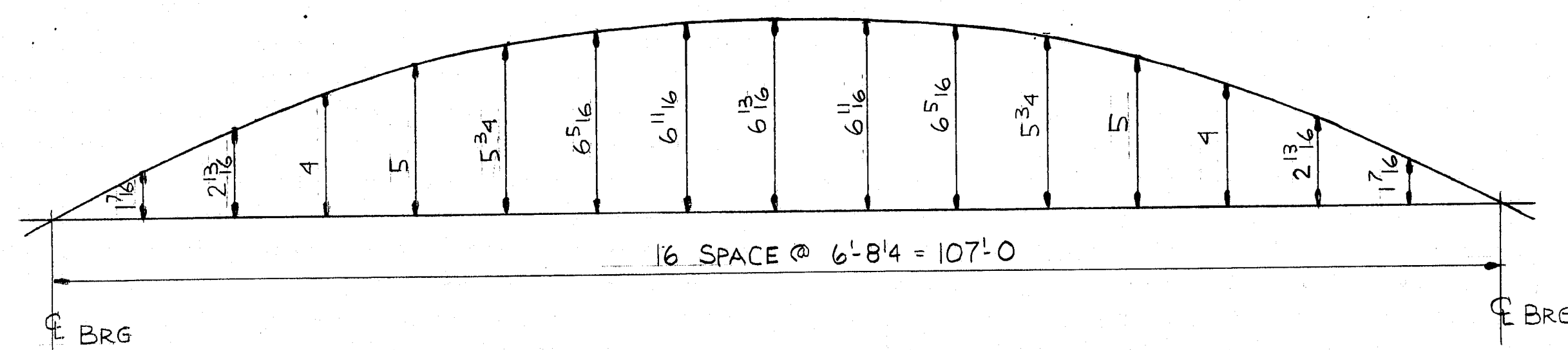
bs1 - 12 REQ'D  
bs1a - 4 REQ'D (NO HOLES)  
CUT TO FIT IN SHOP  
STEEL: ASTM A572



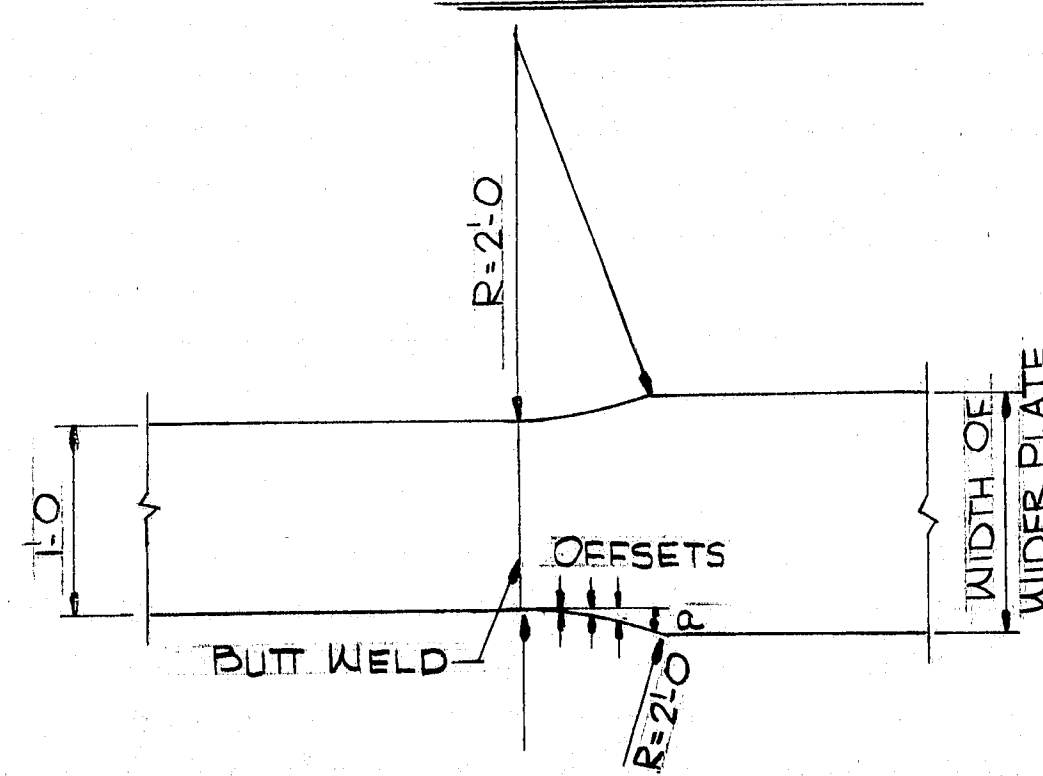
dp1 - 8 REQ'D



dp2 - 16 REQ'D



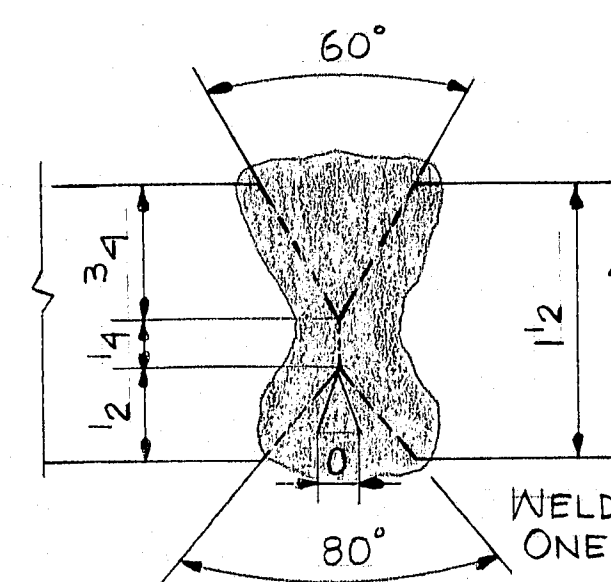
CAMBER DIAGRAM



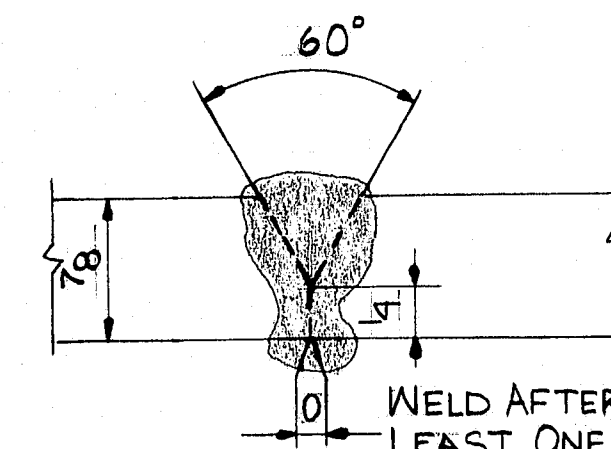
DISTANCE FROM NARROW PLATE END	2	4	6	8	8 5/8	10	12 1/2
OFFSET	3/32	1/32	3/4	1 3/8	1 1/2	2 1/4	3 1/2

FOR SPLICE OF 12" x 15" PLATES:  $a = 1/2$   
FOR SPLICE OF 12" x 19" PLATES:  $a = 3/2$

FLANGE SPLICE DETAIL



B-L3-S  
DETAIL WA



B-L2b-S  
DETAIL WB

NOTE:

THE FOLLOWING WELDS SHALL BE MADE BY THE AUTOMATIC OR THE SEMI-AUTOMATIC SUBMERGED ARC WELDING PROCESS:

- FLANGE PLATE BUTT JOINTS
- WEB PLATE BUTT JOINTS
- WEB TO FLANGE WELDS
- BEARING STIFFENER TO WEB WELDS

ALL OTHER WELDS MAY BE MADE BY ANY PROCESS APPROVED BY AWS D2.0 - 69 FOR THE PARTICULAR TYPE OF JOINT AND BASE METAL.

WELDING ELECTRODES:

THE FLUX-ELECTRODE COMBINATION FOR AUTOMATIC OR SEMI-AUTOMATIC SUBMERGED ARC WELDING SHALL CONFORM TO THE REQUIREMENTS FOR AWS FLUX DESIGNATION F71-XXXX. (FOR A36-A514 A588 & A572 STEEL) F110 (FOR A514).

ELECTRODES FOR MANUAL SHIELDED METAL ARC WELDING SHALL BE AWS CLASSIFICATION E70 LOW HYDROGEN ELECTRODES. FOR A36 & A572-A514 A588 STEEL & E11018-M FOR A514 - STEEL.

MINIMUM WELDING PREHEAT TEMPERATURES:

TEMPERATURE	THICKNESS	PREHEAT
500 F	FOR THICKNESS OF THICKEST PART TO 3/4" INCLUSIVE.	
700 F	" " " " " OVER 3/4" TO 1-1/2" INCLUSIVE.	
1500 F	" " " " " OVER 1-1/2" TO 2-1/2" INCLUSIVE.	

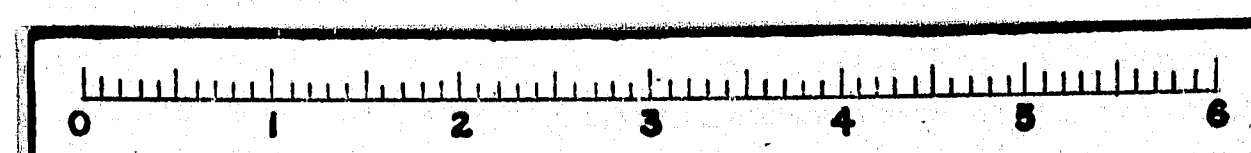
WELDING AND INSPECTION SHALL CONFORM TO THE SPECIFICATIONS FOR WELDED HIGHWAY AND RAILWAY BRIDGES. AWS D2.0-69 AND ADDENDA AND THE SPECIAL PROVISIONS AND SUPPLEMENTAL SPECIFICATIONS FOR THIS PROJECT.

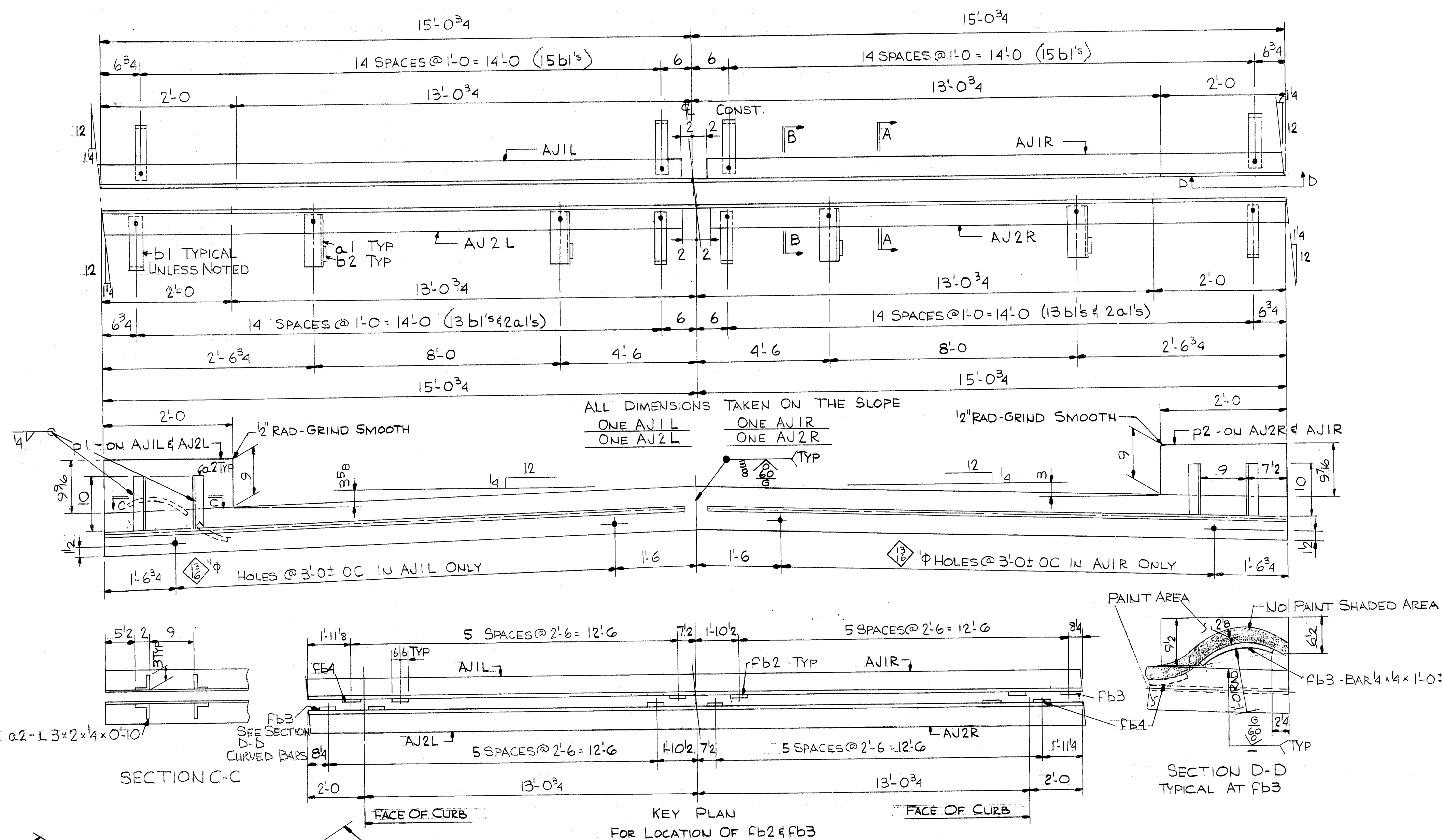
SEE DWG C1 FOR BILL OF MATERIAL

APPROVED 3-11-71  
FEDERAL PROJ NO. I-95-B(87)  
ITEM NO 504.701

BEARING & DIAPHRAGM PLATES - WELDING & CAMBER DETAILS			
2	1-26-71	APP	
1	3-16-71	SEPIA	
0	3-16-71	STATE	
2	3-16-71	CUST	
			JOB: ALTON ROAD BRIDGE ARGYLE MAINE
			CUSTOMER: CIANBRO CORP
			DESIGNER: MSHC BRIDGE DIV.
REV.		ORDER NO.	JOB NO.
CHECKED	1-25-71 PLF		
DRAWN	11-16-70 DWL		
		B70-423	C2

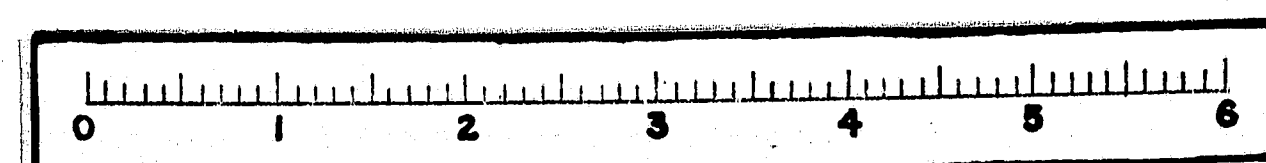
117-153



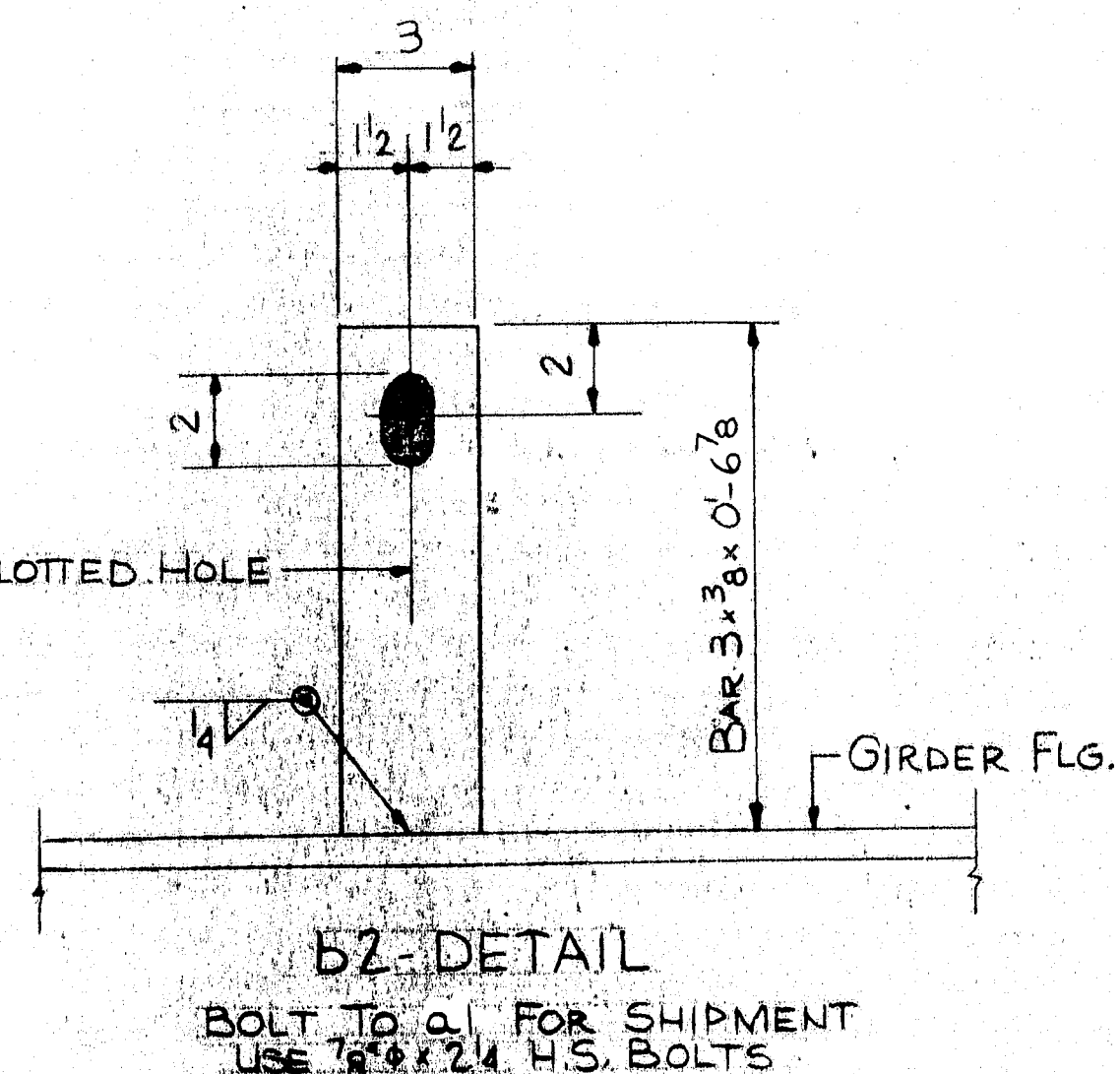
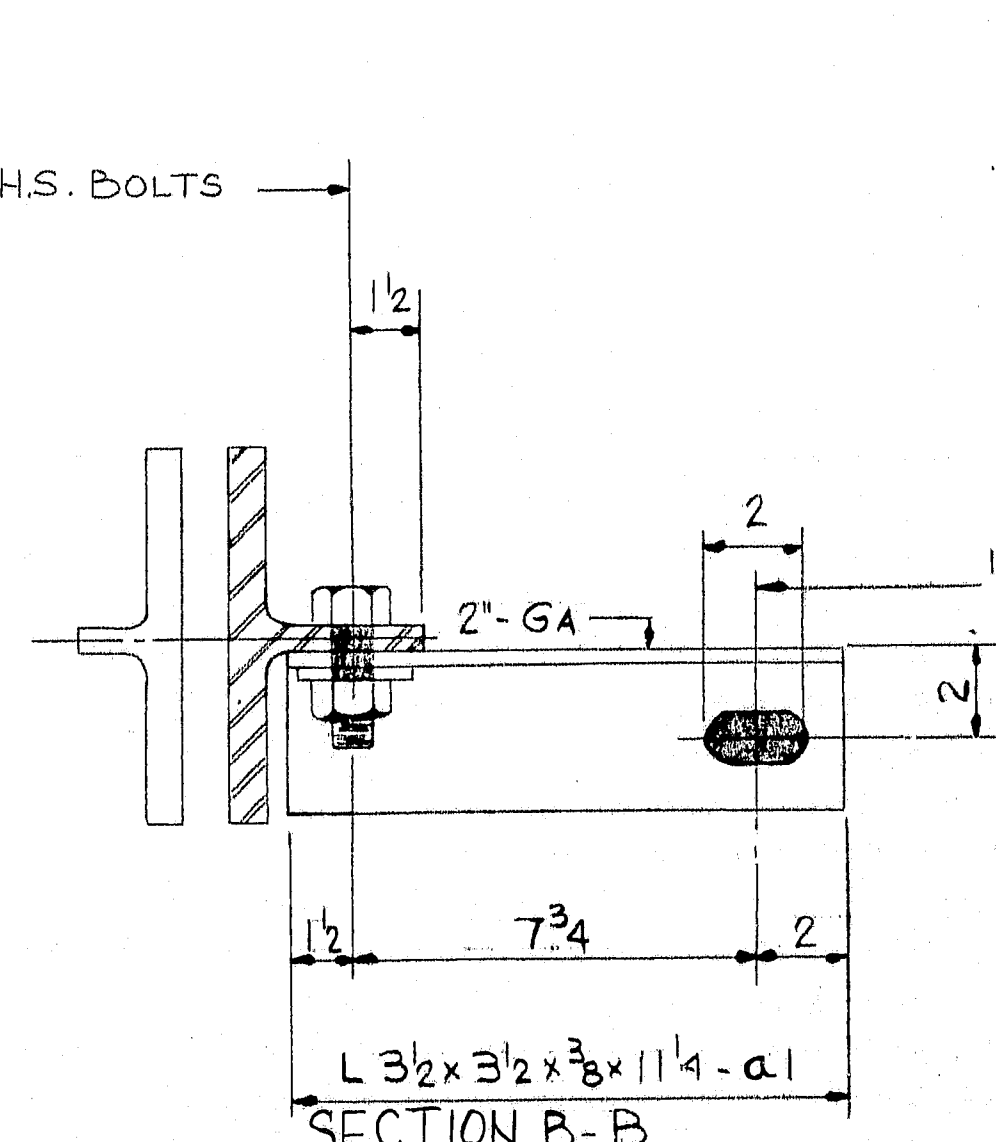
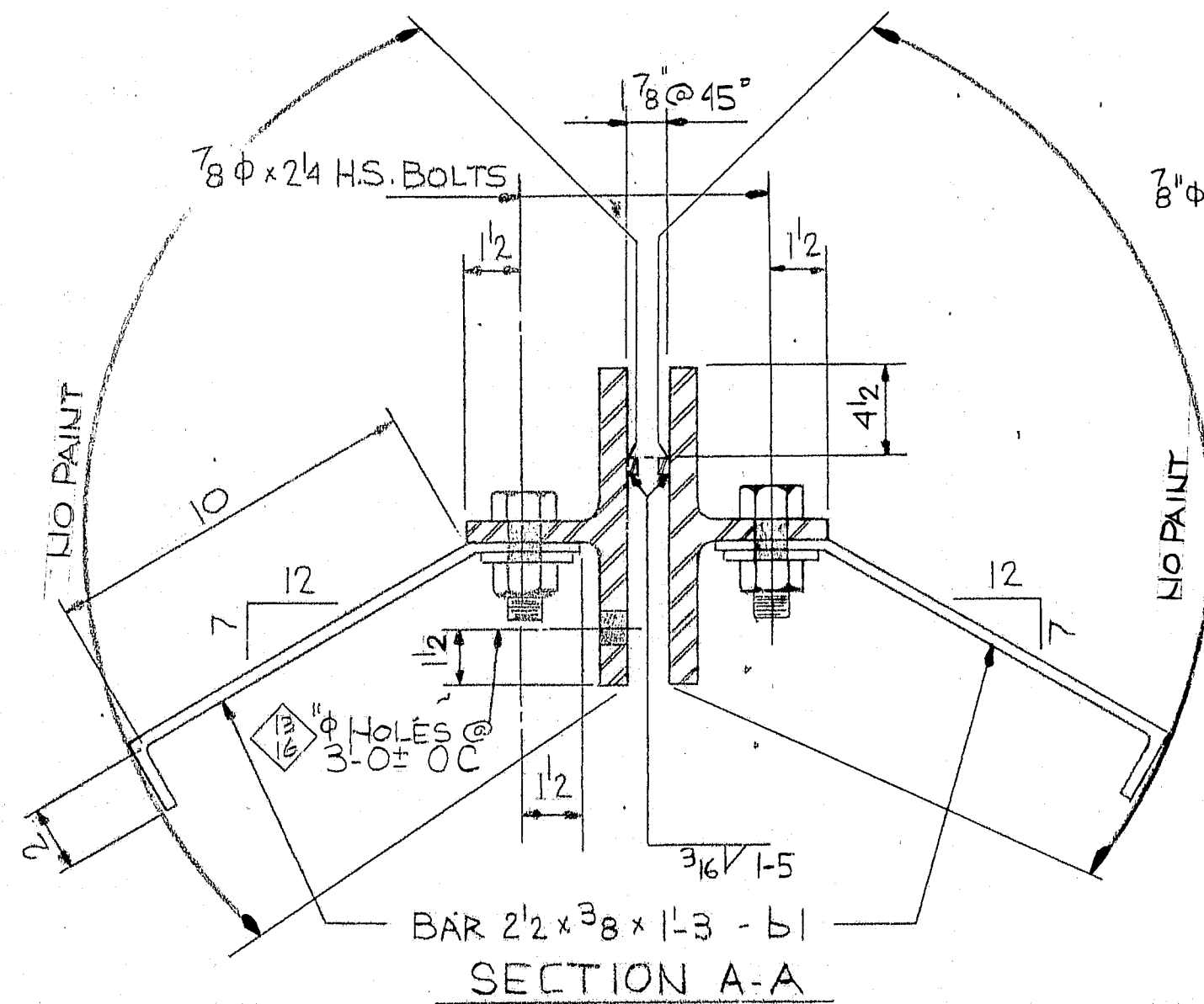
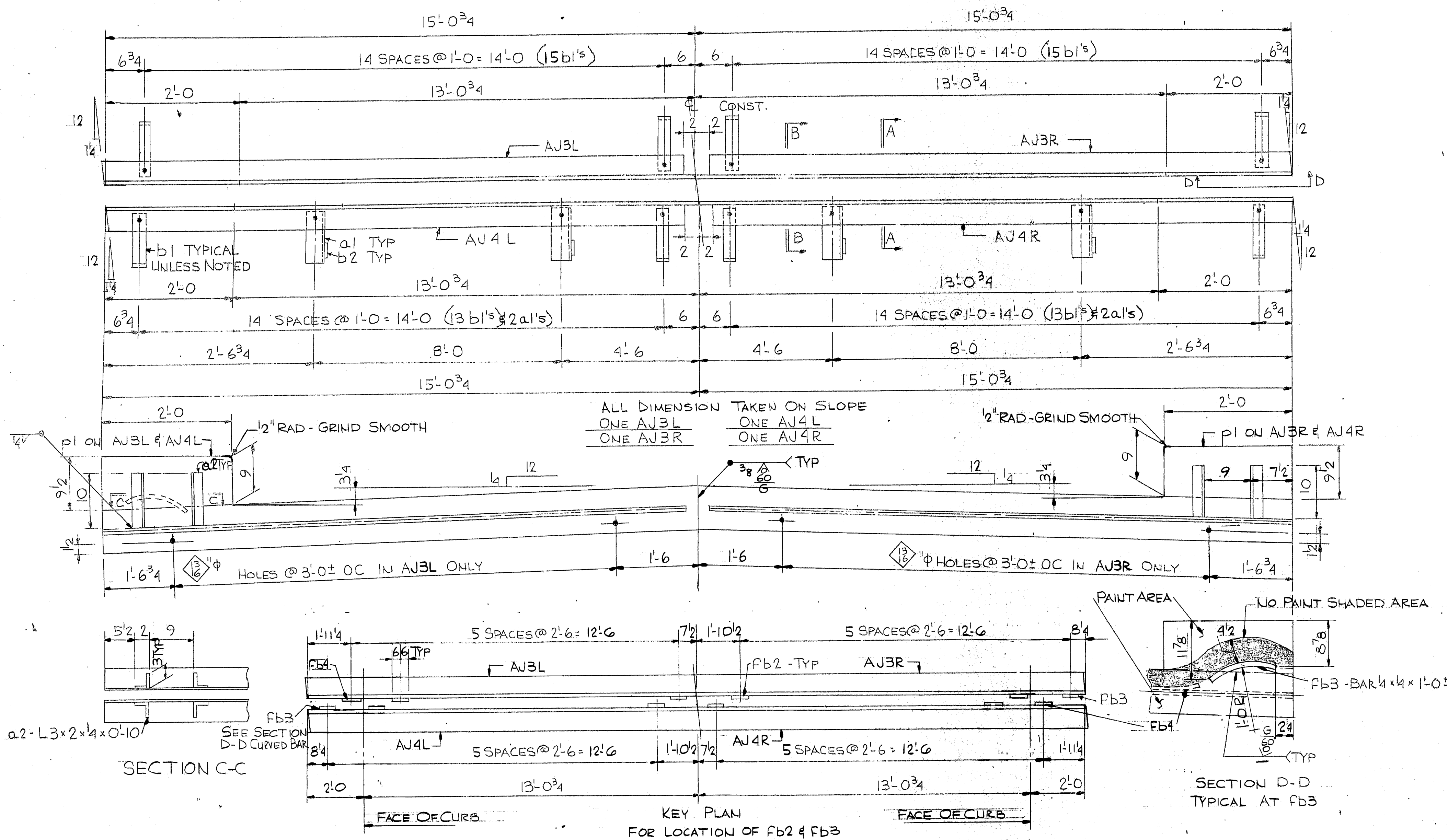


SHIP		BILL OF MATERIAL		JOB NO. B70-423		DWG. NO. J1	
MARK	NO.	MARK	SHAPE	LENGTH	WT.	ITEM NO.	REMARKS
AJ1R	1		WT 4 x 24	15 0 3/4		21	
AJ1L	1		do	15 1 3/16		21	
AJ2R	1		do	15 1 3/16		21	
AJ2L	1		do	15 0 3/4		21	
	56	b1	BAR 2 1/2 x 3/8	1	3	24	BENT
	4	b2	BAR 3 x 3/8	0	6 7/8	23	
	20	Fb2	BAR 1/4 x 1/4	1	0	27	
	2	Fb3	do	1	0	27	CURVED BAR
	2	Fb4	do	1	0	27	BEND
	4	a1	L 3 1/2 x 3/2 x 3/8	0	11 1/4	22	
	8	a2	L 3 x 2 x 1/4	0	10		
	2	p1	R 5/8 x 9 3/16	2	0	26	
	2	p2	R 5/8 x 9 3/16	2	0	26	
	64	SHOP	7/8 x 1/2 BOLTS	0	2 1/4		
	64	SHOP	3/8 HARD WASHER				
FED. PROJ. No. I 95-8(87)							
ITEM No. 504.701							
STEEL: ASTM. A 36							
WELDING ELECTRODE E7016, E7018, or E7028							
SHOP CONN: WELDED & BOLTED							
FIELD CONN: WELDED							
HOLES: 15/16" UNLESS NOTED							
PAINT: RED LEAD PER MAINE SPECS (3 COATS) (EXCEPT AS NOTED)							
SPECIAL CLEANING: BLAST CLEAN							
APPROVED: AS NOTED 3-11-71							
ARMORED JOINT - ABUT 1							
PRINT DIST.				Bancroft & Martin Inc.			
2	1-26-71	APP		South Portland, Maine 04106			
1	3-16-71	SEPIA					
8	3-16-71	STATE					
2	3-16-71	CUST		JOB: ALTON ROAD BRIDGE			
1	3-24-71	SEPIA		ARGYLE, MAINE			
				CUSTOMER: CIAMRO CORP.			
				DESIGNER: M.S.H.C. BRIDGE DIV.			
REV. A	3-24-71	DWL		ORDER NO.	JOB NO.	DRAWING NO.	
CHECKED	1-26-71	PLF			B70-423	J1	
DRAWN	11-23-70	DWL					

117-154





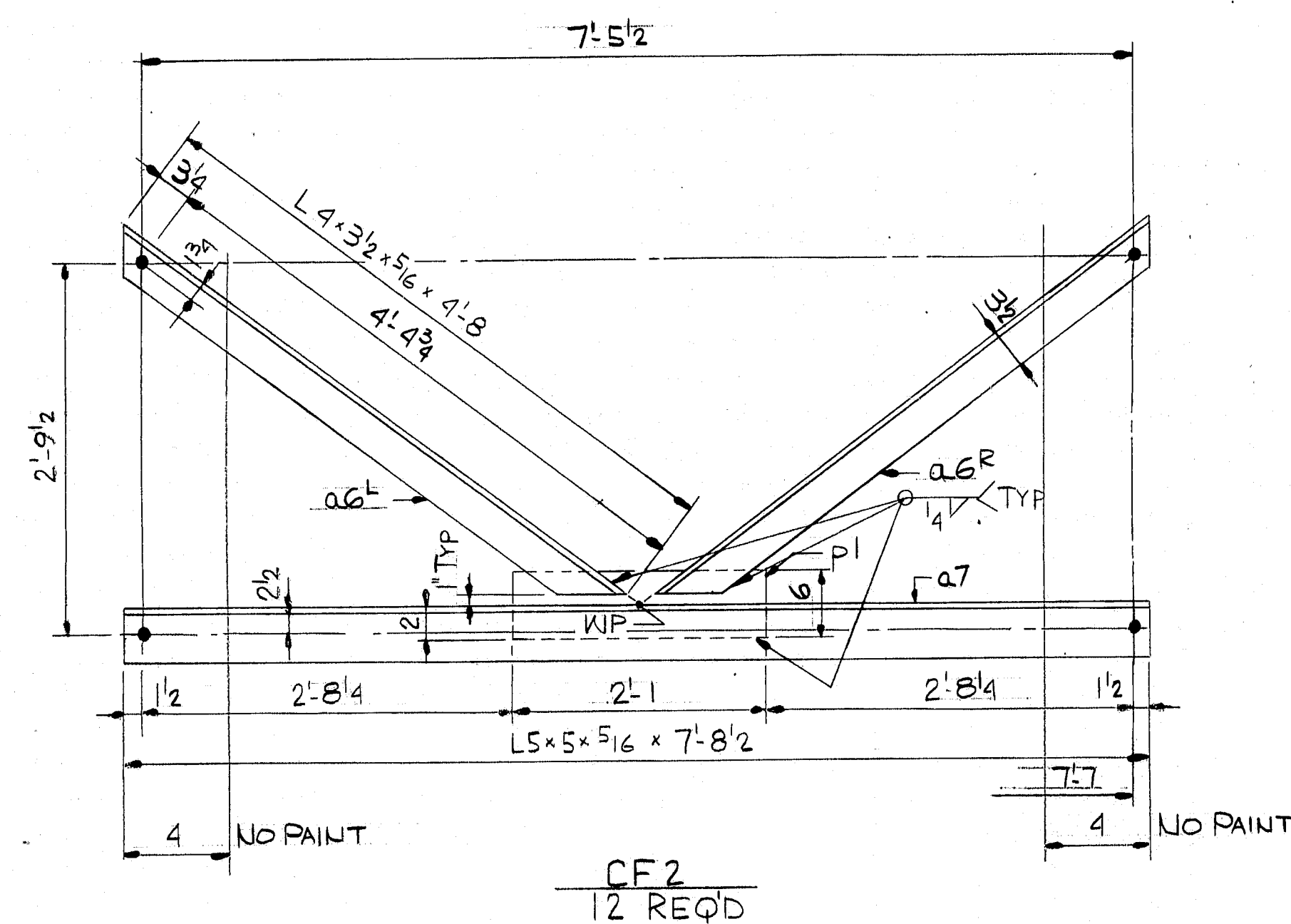
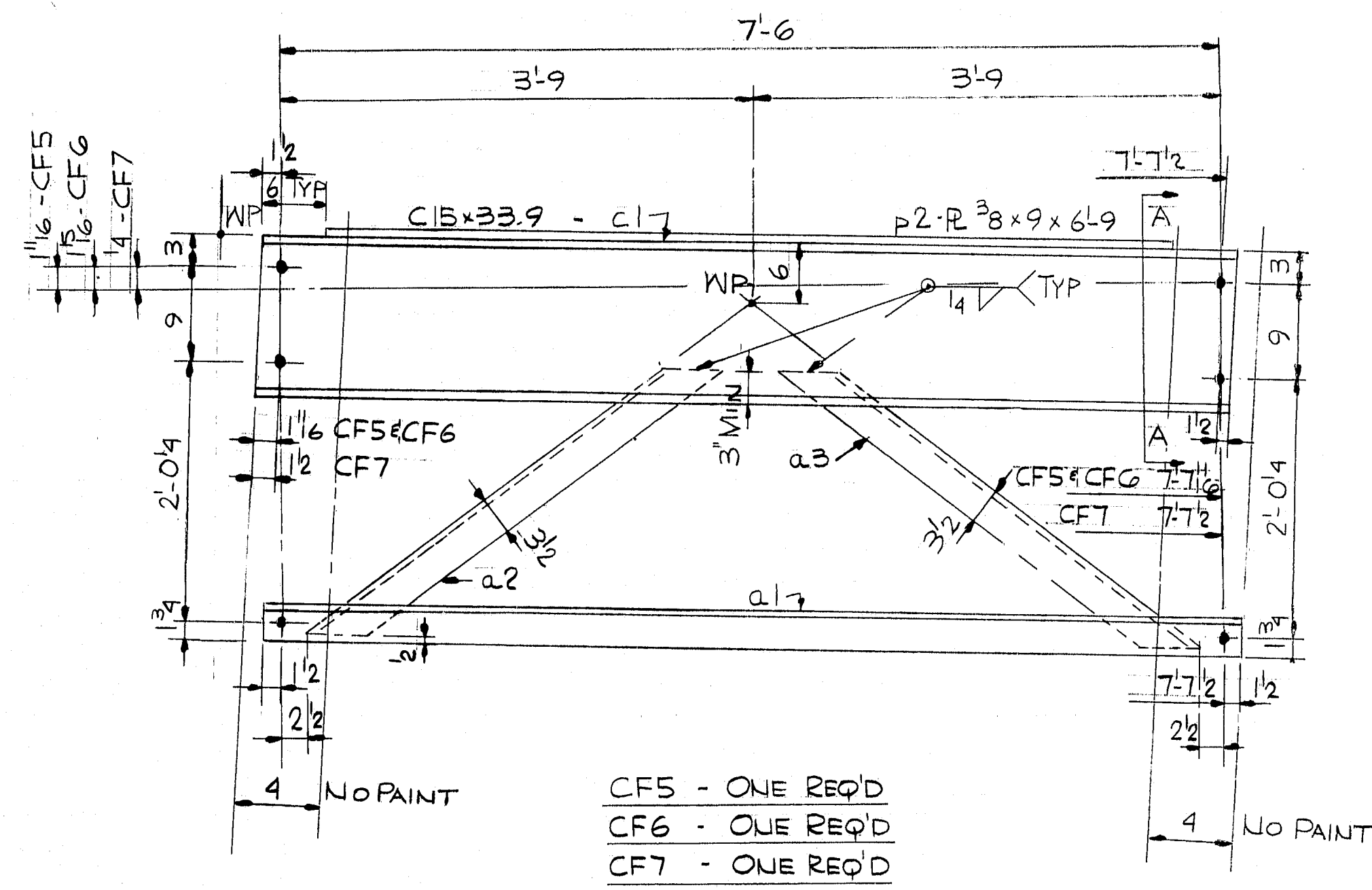
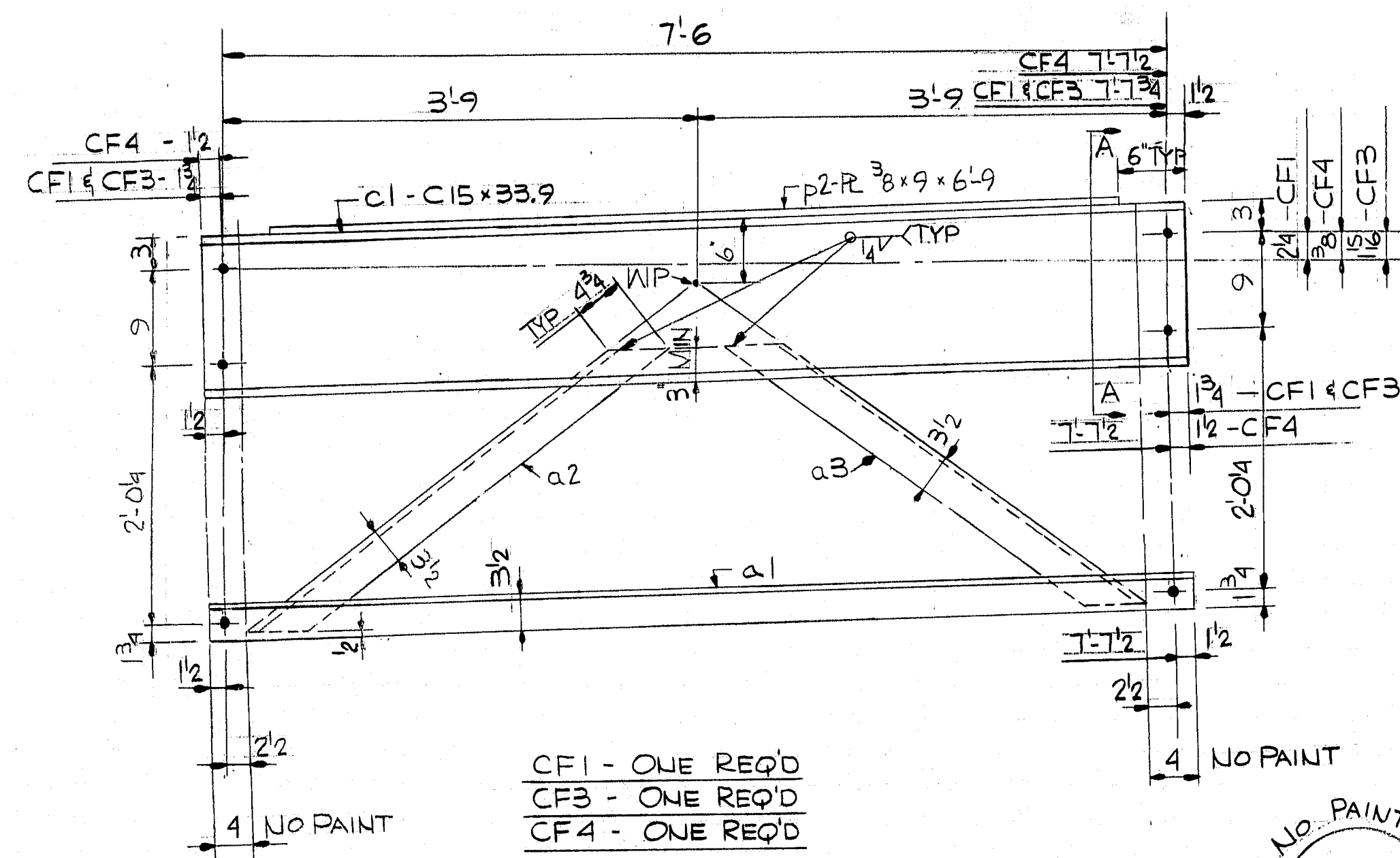


SHIP		BILL OF MATERIAL				JOB NO. B70-423		DWG. NO. J2	
MARK	NO.	MARK	SHAPE	LENGTH	WT.	ITEM NO.	REMARKS		
AJ3R	1		WT 4 x 24	15	0 <sup>3</sup> / <sub>4</sub>	21			
AJ3L	1		do	15	1 <sup>3</sup> / <sub>8</sub>	21			
AJ4R	1		do	15	1 <sup>3</sup> / <sub>8</sub>	21			
AJ4L	1		do	15	0 <sup>3</sup> / <sub>4</sub>	21			
	56	b1	BAR 2 <sup>1</sup> / <sub>2</sub> x <sup>3</sup> / <sub>8</sub>	1	3	24	BENT		
	4	b2	BAR 3 x <sup>3</sup> / <sub>8</sub>	0	6 <sup>3</sup> / <sub>8</sub>	25			
	20	Fb2	BAR 1 <sup>1</sup> / <sub>4</sub> x 1 <sup>1</sup> / <sub>4</sub>	1	0	27			
	2	Fb3	do	1	0	27	CURVED BAR		
	2	Fb4	do	1	0	27	BENT		
	4	a1	L 3 <sup>1</sup> / <sub>2</sub> x 3 <sup>1</sup> / <sub>2</sub> x <sup>3</sup> / <sub>8</sub>	0	11 <sup>1</sup> / <sub>4</sub>	22			
	8	a2	L 3 x 2 x <sup>1</sup> / <sub>4</sub>	0	10				
	4	p1	R <sup>5</sup> / <sub>8</sub> x 9 <sup>1</sup> / <sub>2</sub>	2	0	26			
	64	SHOP	3 COATS BOLTS	0	24				
	64	SHOP	6" HARD WASHERS						
FED. PROJ. NO. I 95-8(87)									
ITEM NO. SC 4.701									
STEEL: ASTM. A36									
WELDING ELECTRODE E7016, E7018 OR E7028									
SHOP CONN: WELDED & BOLTED									
FIELD CONN: WELDED									
HOLES: <sup>15</sup> / <sub>16</sub> " UNLESS NOTED									
PAINT: RED LEAD PER MAINE SPECS (3 COATS) (EXCEPT AS NOTED)									
SPECIAL CLEANING: BLAST CLEAN									
APPROVED: AS NOTED 3-11-71									
ARMORED JOINT - ABUT 2									
PRINT DIST.			Bancroft & Martin Inc. South Portland, Maine 04106						
2	1-26-71	APP							
1	3-16-71	SEPIA							
8	3-16-71	STATE							
2	3-16-71	CUST	JOB:	ALTON ROAD BRIDGE					
				ARGYLE, MAINE					
				CUSTOMER: CIANBRO CORP.					
				DESIGNER: M.S.H.C. BRIDGE DIV.					
REV.			ORDER NO.	JOB NO.			DRAWING NO.		
CHECKED	1-27-71	PLF		B70-423			J2		
DRAWN	11-23-70	DWL							



117-156





SHIP		BILL OF MATERIAL				JOB NO. B70-423		DWG. NO. P1	
MARK	NO.	MARK	SHAPE	LENGTH	WT.	ITEM NO.	REMARKS		
CF1	1	-	SHOP ASSEMBLY	-					
CF2	12	-	do	-	-				
CF3	1		do						
CF4	1		do						
CF5	1		do						
CF6	1		do						
CF7	1		do						
	6	a1	L4x3 1/2 x 5/16	7' 9"		9			
	6	a2	do	4' 0 1/2"		11			
	6	a3	do	4' 0 1/2"		11			
	24	a6R	L4x3 1/2 x 5/16	4' 8"		10			12P
	12	a7	L5x5 x 5/16	7' 8 1/2"		12			12L
	6	c1	C15x33.9	7' 9 1/4"		5			
	12	p1	BAR 6 x 3/8	2' 1"		14			
	6	p2	R 3/8 x 9	6' 9"		13			

117-157

